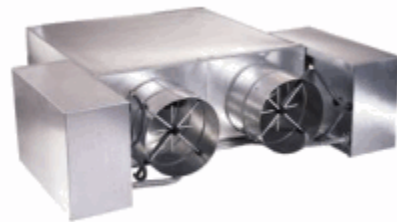


Here is a quick summary of the Johnson Controls line of VAV boxes. We sell boxes with and without factory mounted controls. If you are interested in additional information, it would be our pleasure to help you

### Dual Duct Terminal - TDS

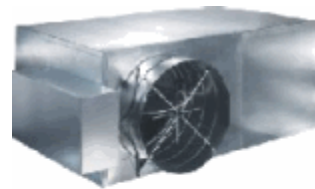
Model TDS terminals provide Variable Air Volume (VAV) control beyond the typical dual duct box. They are specifically designed for precise air delivery throughout the entire operating range, regardless of the installed inlet conditions. These units can be ordered with or without a direct digital controller. This controller can operate stand-alone, on a Johnson N2 trunk, or on a LON trunk.



TDS terminals take advantage of typical benefits provided by dual duct units, while performing at extremely low sound levels. This is critical in today's buildings, where occupants are placing more emphasis on indoor acoustics.

### Parallel Flow Fan Powered - TVS

The TVS is designed for zones that require heat while the central system is cooling. Owners enjoy lower operating costs through heat recovery from the ceiling plenum space, thereby reducing the need to cycle the central air system. Additionally, fan power is consumed only while heating, and at a lower airflow than the cooling CFM. Indoor air quality is enhanced by higher air motion than with single duct units.



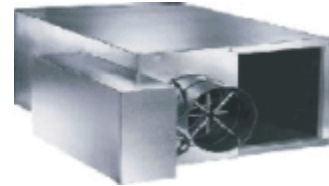
<b>Model/Options</b>	TVS-EH with Electric Heat; TVS-WC with Hot Water Coil; Low Profile Option
<b>Sizes</b>	4 through 16 (inlet sizes); 4 through 24 (fan sizes)
<b>Airflow Ranges</b>	100 - 4100 CFM (primary); 50 - 2400 CFM (fan)
<b>Ratings/Certifications...</b>	ARI 880 certified; cETL listed



## Series Flow Fan Powered - TCS

---

This unit provides a constant conditioned airflow by blending induced and primary air. The TCS's low noise levels allow properly sized units to be located above occupied office spaces. Enhanced IAQ is achieved with the outside air valve option, which controls outside air to each occupied zone, independent of primary cooling requirement. DDC control systems can track and adjust the amount of primary and outside air per zone.



<b>Model/Options</b>	TCS-EH with Electric Heat; TCS-WC with Hot Water Coil; Low Profile Option; Outside Air Valve Option; Low Temperature Option
<b>Sizes</b>	4 through 18 (inlet sizes); 4 through 44 (fan sizes)
<b>Airflow Ranges</b>	100 - 4600 CFM
<b>Ratings/Certifications...</b>	ARI 880 certified; cETL listed

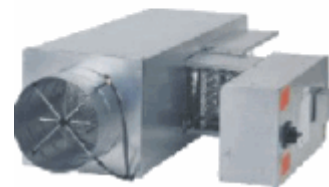
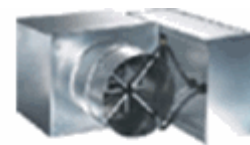
## Single Duct Terminal - TSS

---

Engineered for quiet performance, Model TSS precisely controls the flow of conditioned air to a room or zone.

Constructed of galvanized steel, the TSS features the highly amplified and aerodynamically designed airflow sensor. The combination results in minimum pressure drops and low noise levels.

Electric heat is located upstream of the damper, providing uniform airflow at all damper positions and extended element life.



<b>Model/Options</b>	TSS-EH with Electric Heat; TSS-WC with Hot Water Coil; TSS-SA with Integral Discharge Sound Attenuator; Low Profile Option
<b>Sizes</b>	4 through 22

<b>Airflow Ranges</b>	100 - 8000 CFM
<b>Ratings/Certifications...</b>	ARI 880 certified; cETL listed