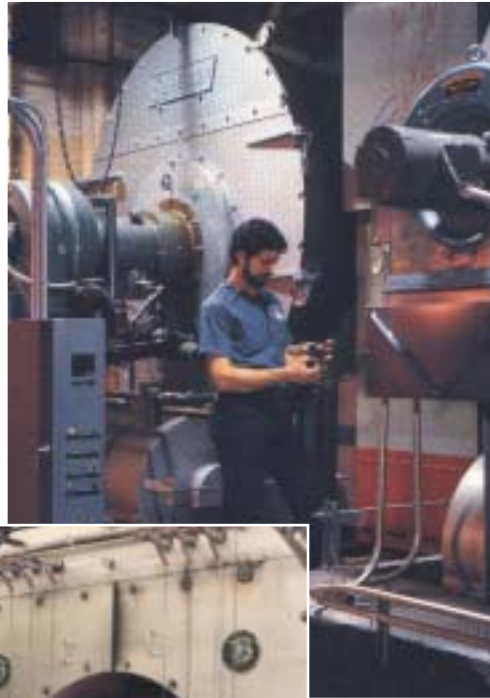


INTEGRATED CONTROLLER APPLICATIONS



- Hospitals
- Factories
- Refineries
- Schools
- Chemical Plants
- Process
- Universities
- District Heating



Thinking Beyond the Traditional...

3 Manchester Rd. ■ Derry, NH 03038 ■ USA
Tel: 603 - 432 - 4100 ■ Fax: 603 - 432 - 1570
www.fireeye.com

Sensor Type	NX1020 Gas Sensor	NX1030 Steam Sensor	NX1040 Boiler Temperature Sensor
Supply Voltage:	24Vdc +/-10%	24Vdc +/-10%	24Vdc +/-10%
Supply Current:	Approximately 10mA	Approximately 10mA	Approximately 10mA
Ambient Temperature Range:	32 - 160°F/ 0 to 70°C	32 - 160°F/ 0 to 70°C	32 - 160°F/ 0 to 70°C
Protection Category:	NEMA3 / IP44	NEMA3 / IP44	NEMA3 / IP44
Dimensions:	1 3/4" (44mm) dia x 3 3/8" (85mm) long (incl. connector)	1 3/4" (44mm) dia x 3 3/8" (85mm) long (incl. connector)	1/4" (6mm) dia x 7 7/8" (200mm) long. Body: 2 5/8" (66mm) dia. x 3.0" (75mm) long
Mounting Dimensions:	1/2" NPT or B.S.P.	1/2" NPT or B.S.P.	Insertion well not included
Electrical Connection:	6 ft Flying lead (not shown in photo)	6 ft Flying lead (not shown in photo)	6 ft Flying lead (not shown in photo)
Weight:	1 lb./450g	1 lb./450g	1/2 lb./200g
Maximum Working Pressure/ Temperature:	3.75psi/250mbar for S-class applications 4.50psi/300mbar for non S-class applications	375 psi/25bar (20 bar S class)	0 to 350°C /32 - 662°F Absolute Temperature: 842°F / 450°C
Burst Pressure:	15psi/1bar	1200psi/80bar	N/A



Nexus Safety Sensors



Thinking Beyond the Traditional...

3 Manchester Rd. ■ Derry, NH 03038 ■ USA
 Tel: 603 - 432 - 4100 ■ Fax: 603 - 432 - 1570
www.fireeye.com

NEXUS

Global Care takes Global Dedication

Fireeye is proud to offer true world wide service. We have dedicated and talented professionals, covering every continent. Our teams provide the highest level of technical and sales support.



TEAM USA



TEAM EUROPE

Our distributors and regional sales staff are always available to meet your requirements across the globe. Wherever your equipment is located, Fireeye offers the same high quality level of service.



TEAM ASIA

When you choose combustion equipment, make sure you benefit from the best support team.



®

Thinking Beyond the Traditional...

3 Manchester Rd. ■ Derry, NH 03038 ■ USA
Tel: 603 - 432 - 4100 ■ Fax: 603 - 432 - 1570
www.fireeye.com

INTEGRATED CONTROLLER BENEFITS



- Increasing Efficiency
- Reducing Fuel Consumption
- Reducing Emissions & Greenhouse Gases
- Reducing Downtime & Maintenance



Thinking Beyond the Traditional...

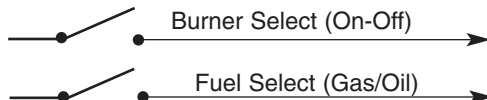
3 Manchester Rd. ■ Derry, NH 03038 ■ USA
Tel: 603 - 432 - 4100 ■ Fax: 603 - 432 - 1570
www.fireeye.com

DISPLAY AND COMMISSIONING TOOL

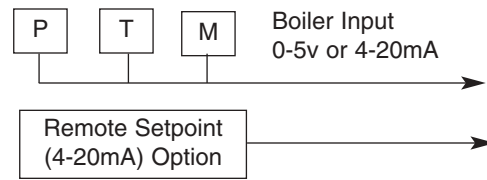


NX550 DISPLAY Commissioning Tool

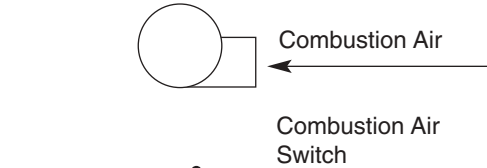
BURNER CONTROL



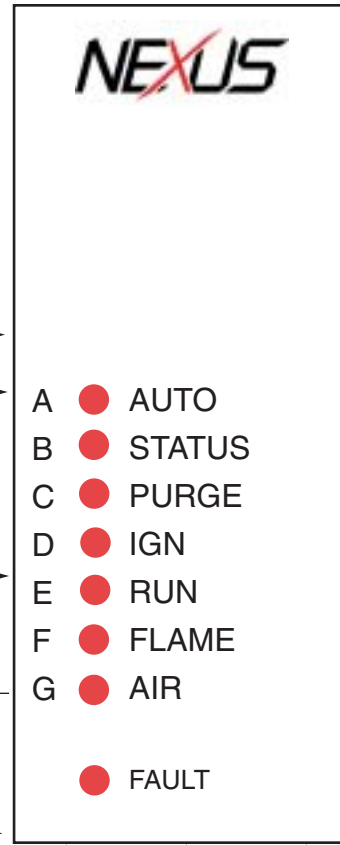
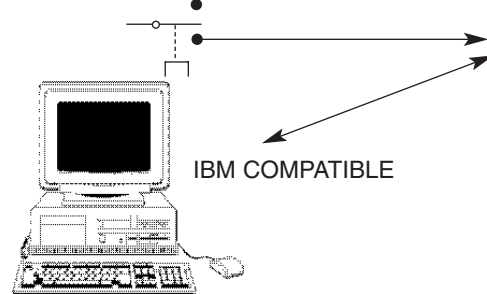
MODULATION RATE CONTROL



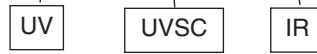
COMBUSTION AIR SUPPLY



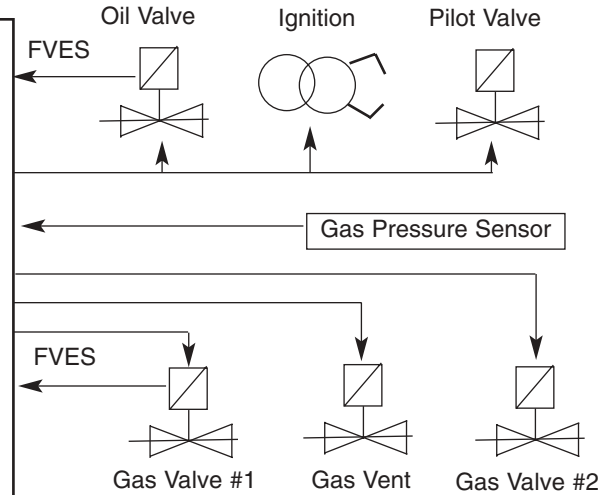
SERIAL COMMUNICATION



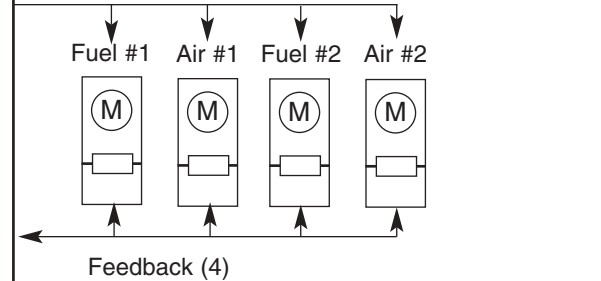
FLAME DETECTION



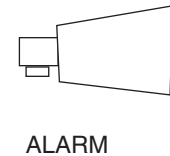
FUEL CONTROL AND MONITORING



FUEL/AIR RATIO



FAULT INDICATION



Thinking Beyond the Traditional...

3 Manchester Rd. ■ Derry, NH 03038 ■ USA
 Tel: 603 - 432 - 4100 ■ Fax: 603 - 432 - 1570
www.fireeye.com



Servo Type	NX04-1,-2	NX20-1, -2	NX50-1, -2
Supply Voltage:	NX04-1 120VAC +/-10%, 50/60Hz NX04-2 230VAC +/-10%, 50/60Hz	NX20-1 120VAC +/-10%, 50/60Hz NX20-2 230VAC +/-10%, 50/60Hz	NX50-1 120VAC +/-10%, 50/60Hz NX50-2 230VAC +/-10%, 50/60Hz
Nominal Torque:	3lb-ft/4Nm	15lb-ft/20Nm	37lb-ft/50Nm
Power Consumption:	5VA Nominal	6VA Nominal	15VA Nominal
Working Temperature Range:	14-140°F/-10 to +60°C, 100% duty Cycle	14-140°F/-10 to +60°C, 100% duty Cycle	14-140°F/-10 to +60°C, 100% duty Cycle
Protection Category:	NEMA2 / IP31	NEMA4 / IP65	NEMA4 / IP65
Maximum Angle Rotation:	270°	270°	270°
Rotation Limits:	High & low position micro limit switches	High & low position micro limit switches	High & low position micro limit switches
Feedback Potentiometer:	Single turn conduc- tive plastic, 5K Ω +/- 1% linearity	Single turn conduc- tive plastic, 5K Ω +/- 1% linearity	Single turn conduc- tive plastic, 5K Ω +/- 1% linearity
Nominal Dimensions:	3.93"(100mm) high x 2.83" (72mm) wide x 4.56" (116mm) deep	5.7"(145mm) high x 3.93" (100mm) wide x 5"(128mm) deep	6.6"(169mm) high x 4.88" (124mm) wide x 5"(128mm) deep
Weight:	1.55 lbs./0.7kg	4.4 lbs./2kg	5.94 lbs./2.7kg
Installation Position:	Any	Any	Any



Nexus Positioning Motors



Thinking Beyond the Traditional...

3 Manchester Rd. ■ Derry, NH 03038 ■ USA
Tel: 603 - 432 - 4100 ■ Fax: 603 - 432 - 1570
www.fireeye.com



TECHNICAL SPECIFICATIONS

Supply Voltage:	120/230 VAC, 50/60Hz
Power Consumption:	Approx. 20VA
Ambient Temperature Range:	32°-140°F (0°to 60°C)
Maximum Connected Load:	2000 VA
Control Unit Protection Category:	Indoor: Mount in a NEMA 12, IP40 enclosure Outdoor: Mount in a NEMA4, IP54 enclosure Situat in a clean environment according to EN6730-1 (IP rating 00)
Dimensions:	
UL listed Wiring Base:	6 7/32" (158mm) wide x 13.0" (330mm) high
Control Unit:	3.0" (78mm) wide x 9.0" (225mm) high x 5 7/8" deep
Weight:	5 7/78" (148mm) tall, installed in wiring base 6.6 lbs (3.0kg) including wiring base



DISPLAY UNIT

2 line 20 character dot-matrix vacuum fluorescent

Dimensions:
4.84" (123mm) square to fit panel cutout
3.8" (97mm) high x 4.25" (108mm) wide

Nexus Controller



Thinking Beyond the Traditional...

3 Manchester Rd. ■ Derry, NH 03038 ■ USA
Tel: 603 - 432 - 4100 ■ Fax: 603 - 432 - 1570
www.fireeye.com